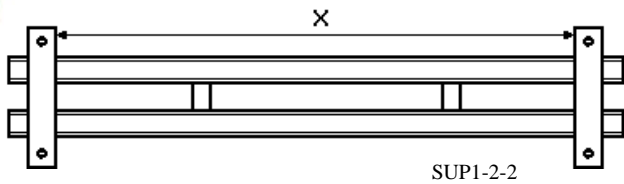
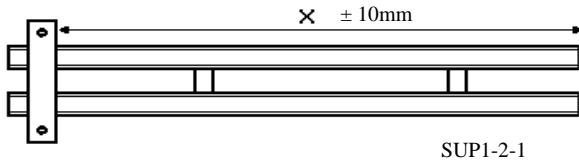
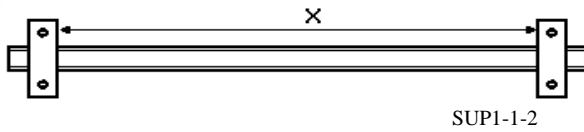
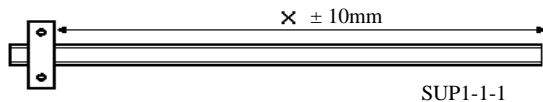


SUP1

Stainless steel treadle

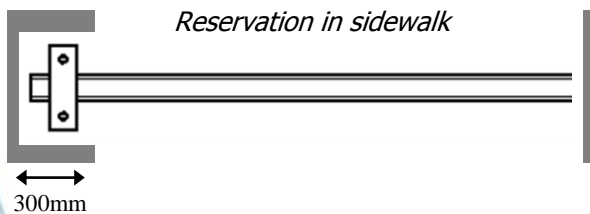
COMPLETELY CUSTOMIZED :

Many supports are available.



SUPPORTS INSTALLATION :

- Saw concrete slab, and realize reservation in the sidewalk.
- Embed support with ECM P5G resin.



During the installation, the sensors are into treadles. They will be blocked by the flange.

Average installation time by sensor : 10 minutes.

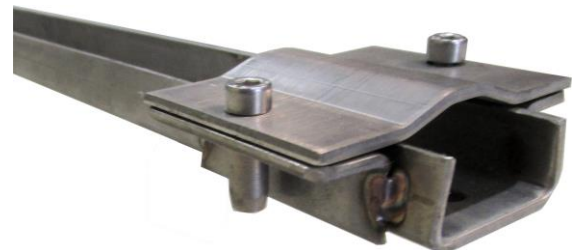


SUP1-Z-Y-X

- Z :** Number of metal sections.
- Y :** Number of flange.
- X :** Metal sections length in dm.

CHARACTERISTICS :

- Stainless steel extruded treadle. Weight : 2, 40 kg/m.
- Metals sections assembled by soldering.
- Sensors installation easy and fast.



FRANCE

Head office

Electronique Contrôle Mesure
4 Rue du Bois Chêne le loup
Parc d'Activité de Brabois
54 500 VANDOEUVRE LES NANCY
☎ (33) 0383442413, Fax (33) 0383443797



Website : www.ecm-france.com
E-mail : info@ecm-france.com

U.S.A



Electronic Control Measurement Inc
464 commercial drive
BUDA 78610 - TEXAS
☎ (512) 2959752, Fax (512) 2959753

RES1 sensor installation into a stainless steel support SUP1

The sensor can be bent to be inserted directly into the support SUP1. Its trapezoidal shape and an acrylic glue ensure an efficient maintain of the sensor inside the support.

