

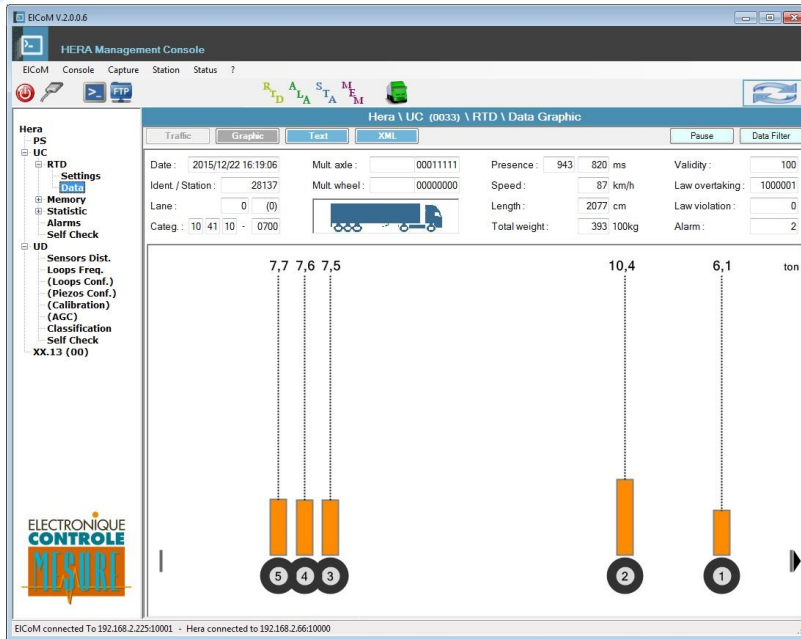
SOFTWARE

ECM products management

Several software have been design by ECM in order to support Users in the managements of ECM products.

EICoM

HERA high-speed weigh-in-motion station management software

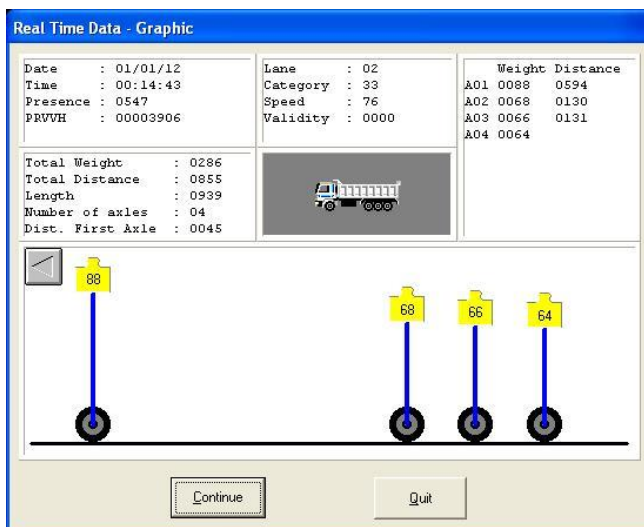


"EICoM" is the software used to interact with the HERA traffic analysis station. It allows users to modify and check the settings of the station as well as to download its traffic data from the CU (SD Card memory...).



wEICoMe

HESTIA high-speed weigh-in-motion station management software



The wEICoMe software allows to a User to interact (remotely or on site) with a HESTIA traffic station.



FRANCE
Head office

Electronique Contrôle Mesure
4 Rue du Bois Chêne le loup
Parc d'Activité de Brabois
54 500 VANDOEUVRE LES NANCY
☎ (33) 0383442413, Fax (33) 0383443797



Website : www.ecm-france.com
E-mail : info@ecm-france.com

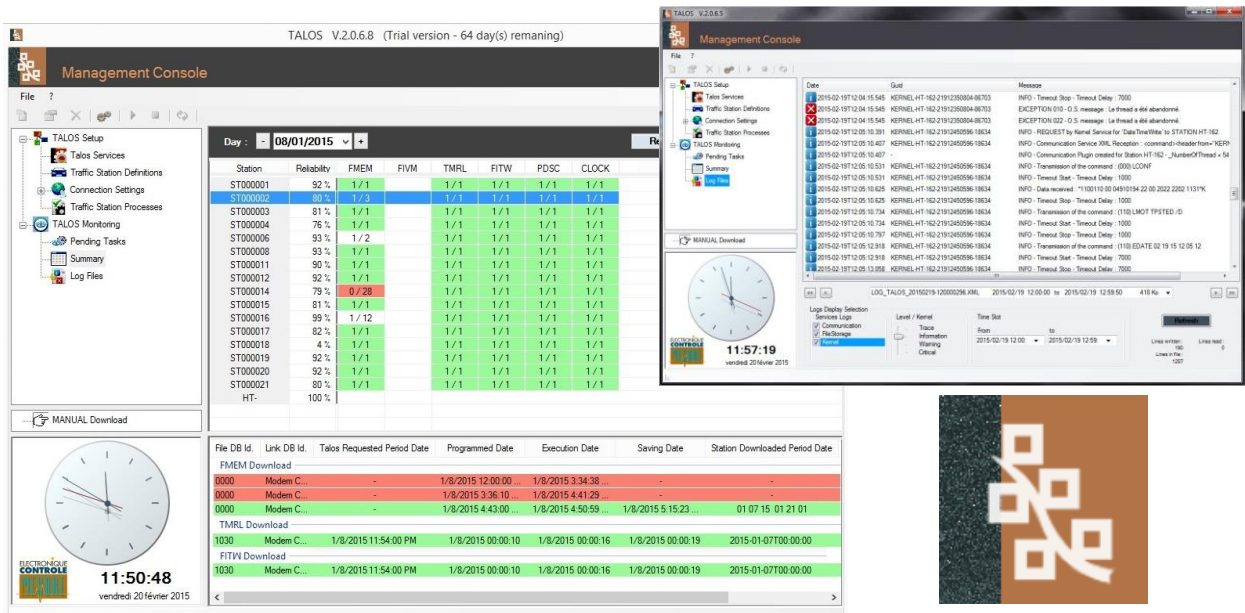
U.S.A



Electronic Control Measurement Inc
464 commercial drive
BUDA 78610 - TEXAS
☎ (512) 2959752, Fax (512) 2959753

TALOS

Automatic data collect software for the traffic station HERA or HESTIA.



TALOS software is designed by E.C.M. It is the result of many years' experiences in the field of data recovery and exploitation.

The main evolution is the ability of the software to download various data from any stations, automatically in the rhythm of the Operators. For this, the computer must have an access to the stations with a modem, Ethernet or serial link.

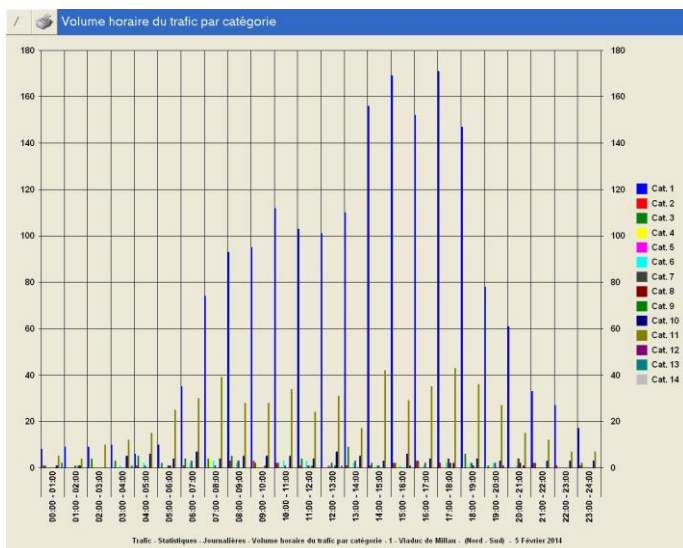
The configuration possibilities and the software settings, was developed in order to the Operators to personalize TALOS according to his needs.

The Operator could have in real time (statistic or RTD), all the data collected of all the stations in a defined hours.

Furthermore, TALOS interface was thought and designed in ergonomic way, in order to the Operators can use easily and quickly this software.

TALOS II

Traffic station data display software



The user could select all the data that he needs.

This software allows mainly to visualize clearly and accurately the data collected from the traffic station HERA or HESTIA.

These data can be displayed on a data board, a histogram chart or a pie chart.