

# Capella RD2 / RD4

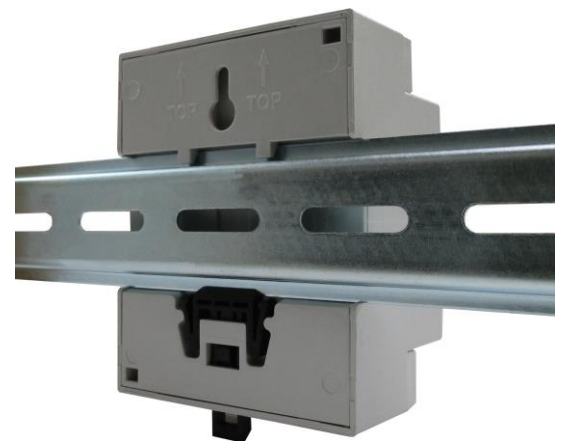
## Resistive detector

The CAPELLA RD2 or RD4, process the signals from the resistive sensors (1 to 4) of E.C.M.

They are in the form of a housing to be connected on a symmetrical DIN rail.

Thanks to their high sensitivity, they are capable of effectively detecting all of the axles of the light or heavy vehicles circulating on the sensors to which they are connected.

They numerous possibilities of configurations allow them to easily interface with all types of electronics like all of those necessary to the classifications of the vehicles in motorway tolls.



CAPELLA RD4 mounted on RAIL DIN

### Electric characteristics :

- 12-24Vdc
- Consumption :
  - **RD2 :**
    - 0,18 W max. without bias resistors,
    - 0,65 W max. @ 12Vdc with bias resistors, (option),
    - 1,15 W max. @ 24Vdc with bias resistors.
  - **RD4 :**
    - 0,35 W max. without bias resistors,
    - 0,85 W max. @ 12Vdc with bias resistors,
    - 2,55 W max. @ 24Vdc with bias resistors.
- Output characteristics : 24 Vdc maximum, 150 mA maximum.

### On front face :

LED "1" to "4" (red) active during axle detection.



**FRANCE**  
Head office

Electronique Contrôle Mesure  
4 Rue du Bois Chêne le loup  
Parc d'Activité de Brabois  
54 500 VANDOEUVRE LES NANCY  
☎ (33) 0383442413, Fax (33) 0383443797



Website : [www.ecm-france.com](http://www.ecm-france.com)  
E-mail : [info@ecm-france.com](mailto:info@ecm-france.com)

**U.S.A**



Electronic Control Measurement Inc  
464 commercial drive  
BUDA 78610 - TEXAS  
☎ (512) 2959752, Fax (512) 2959753

**Climatic characteristic :**

- Operating temperature range : -40 / +80°C (-40°F / +176°F),
- Humidity : < 95% HR without condensation.

**Mechanical characteristics :**

- Fixing : symmetrical rail DIN,
- Weight : 135 g (4,5 oz),
- Dimension : 71 x 90,5 x 62 mm (2,80 x 3,56 x 2,44 inch) (W x D x H).

